




 colegioplanck.com.br

 /colegioplanck

 Av. Cassiano Ricardo, 1963, Jd. Aquarius
S.J.Campos - SP | Brasil | CEP 12240-540

Global Guidance Coordinator Nicole Ribeiro
 nicole.fruituoso@colegioplanck.com.br

Founded in 2017

Escola Premium Ranks among top schools on the ENEM

Board and Co-Founders

André Oliveira de Guadalupe
Marcelo Miguel Martins Pelisson
Umberto César Chacon Malanga

+100 Faculty

>30% hold Masters's and PhD's

Enrollment

272 Students in grades 10-12
600 total students grade 7 to post-grad (pre-vestibular)

220+ hours of Math in High School

4,080 hours of required courses
1,530 hours electives (over 3 years)
Among first Brazilian schools to offer Design Maker

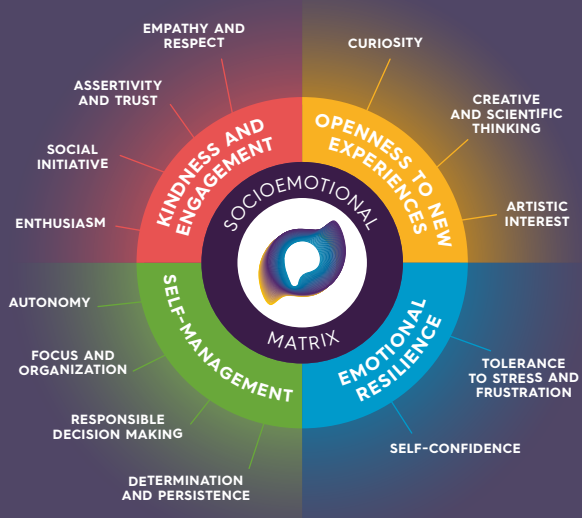
Planck Calendar

2020 Academic Year: Jan. 27 - Dec.14

Core Values

Academic Excellence
Partnership with Families
Personal Growth
Happy Students
Global Citizenship

Emotional Punch Map



Colégio Planck is a private, secular institution, solely funded by tuition installments. Planck serves 11 to 17 year olds in the four years of middle school and three years of Brazilian High School corresponding to the American grades 6-12.

Excellence in Education - Colégio Planck

At Planck, students are immersed in a rigorous academic environment and continuously challenged by increasingly difficult work with individualized support (including advanced independent study) and diverse activities to develop transferable skills, preparing them well for national and international admissions. Planck's mission is to provide students the highest quality preparation not just for exams, but for life, encouraging them to refine their socio-emotional and professional skills through myriad extracurricular activities — like Science Fairs and Model UN — and to become true protagonists. At its institutional core, Planck values affordability, simplicity, student-centeredness and excellent people. Leading by example, Planck works to develop in students the values of:

- **Ethics and Honesty**
- **Autonomy**
- **Discipline and Execution**
- **Sense of Ownership**
- **Willingness to Learn**

Through immersive English curricula, school wide presentations and formal support for exchange programs and international study, Planck's education transcends cultural and geographic bounds. Field trips and service work place students before different realities and stimulates connections between the the classroom and real world, while group work, counseling and debates help students develop interpersonal skills, rounding out their educations.

Planck has already proven committed to its mission, positioning itself, in its first year of operation, among the elite group of only 10 institutions to have more than 1 student per class gain acceptance to ITA, the revered engineering university, through Brazil's most rigorous competitive entrance exam (vestibular). Planck ranks among the top 5% of school on the ENEM (National Exam for High School students) and 100% of Planck students have been accepted to universities.

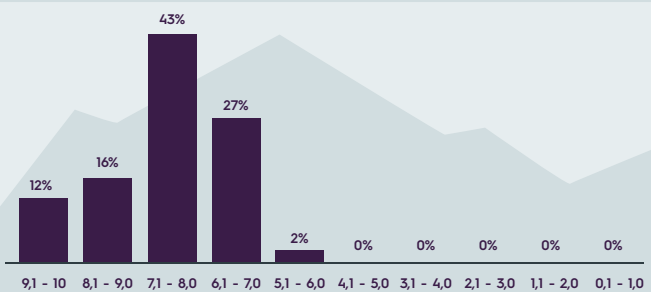
This success stems from unique combination of factors: small class sizes, individualized support and counseling, a well-crafted curriculum (Sistema Ari de Sá — SAS), excellent, experienced teachers and staff, and directors who continue to teach and always put student success first.

As a result of our achievements and our broader view of global education, in its third year, Planck has more than doubled enrollment, expanding into a new campus in 2020 that will better cater to the needs of our students and staff, so we can continue to offer a welcoming, respectful environment that promotes effective learning while helping students to build self-confidence and bonds of friendship.

Grading System

Planck uses a 0.0 to 10.0 grading scale, with no weighting or grade inflation. The minimum passing grade is 6.0 in each subject. With our high academic bar, a 6.0 represents satisfactory achievement.

Grade Distribution Range - Senior Class os December 2017



Excellence in Education – Colégio Planck

Rooted in the school's values, Colégio Planck is structured over 3 Pillars: Academic Rigor, Protagonism and Socio-emotional Development, in other words:

Middle School – Socioemotional development

The thrill of discovery and exploration comes alive within our classrooms. Every day, our teachers offer an unparalleled educational experience, based on:

- Curriculum aligned with the development of socioemotional learning
- Collaborative and Project-based learning
- Equity

First Year – Authenticity and self-discovery

- Personal evaluation and strategic planning
- Focus on skills and core competencies, time management and empathy
- Entrepreneurship focus with Fab Lab Design Maker (100 hours of work)

Second Year – Protagonism

- Vocational orientation & test selection
- Olympiad prep and independent study
- Summer programs and SAT Prep
- Leadership in Fab Lab projects

Third Year – Exam Prep

- Fab Lab Projects reduced
- Technical Portfolios – Power Point/ Prezi/ VideoScribe, Video Editing–book production – FlipPD

Institutional Highlights

- Google School of Reference: Certified (2017); 1 of 14 in Brazil and 184 in the world (font: Google Brasil)
- UNESCO Associated School: only in Brazil; director invited on missions to Finland (2017)/Japan (2018)
- INTEL Arduino Challenge Champion (2017)
- SAS reference in pedagogical and management practices (only nationwide)

College Placements (Brazil)

- **ITA** – Instituto Tecnológico de Aeronáutica
- **IME** – Instituto Militar de Engenharia
- **AFA** – Academia da Força Aérea
- **USP** – University of São Paulo
- **UNICAMP** – State University of Campinas
- **UNESP** – University of the State of São Paulo
- **UNIFESP** – Federal University of São Paulo
- **PUC** – Catholic University of São Paulo
- **INSPER** – Instituto de Ensino e Pesquisa

Summer Programs

- **Columbia University**
- **Harvard University**
- **U. of Connecticut**
- **Marist College**
- **Jacobs U. (Germany)**
- **Bentley University**
- **University of Ohio**

Disciplines & Departments:

- **Mathematics** (Algebra, Trigonometry, Analytic and Spatial Geometry)
- **Portuguese Language** (Grammar, Literature and Writing)
- **Chemistry** (Inorganic, Physical, Organic and Electrochemistry)
- **Physics** (Mechanics, Thermodynamics, Waves, Optics and Electromagnetics)
- **Biology** (Cell Biology, Biodiversity of Living Beings, Genetics, Animal & Human Physiology, Botany)
- **Geography and Currents Events** • **History** (Brazilian and World) • **Philosophy & Sociology**
- **Design Maker** (Creative Design Thinking, Business Model Generation, Science, Art & Design; Integrated Laboratory Class)
- **PAIDA** – Individualized Academic Support Program • **Career Guidance and Fairs** • **Academic Advising**
- **Communication, Marketing and Alumni Relations**
- **Planck Arts Center** (Sculpture, Theater, Drawing, Music and Dance)
- **Planck Sports Center** (Chess, Handball, Table Tennis, Football, Yoga, etc.)
- **Planck Technology Center** (Robotics, Programming, Social Media, Startup and Student Tutor Google for Education)
- **Planck International** (English, French, Spanish, Summer Programs and PGG)
- **P30** (Preparatory for Mathematics, Physics, Astronomy, Philosophy and other Olympiads)
- **Pedagogical Projects** (Planck ONU, PPAD, Debating Club, Radio Planck, etc.)

Location:

São José dos Campos: population approx. 700,000.
Ranked 4th in Brazil for quality of life.



90km North of São Paulo, São José dos Campos, and the surrounding Paraíba Valley, is known for academic excellence, boasting the Aeronautical Institute of Technology (ITA) and campuses of the Federal U. of São Paulo (UNIFESP), U. of the State of São Paulo (UNESP), and State U. of São Paulo (USP), as well as research institutions like the National Institute of Space Research (INPE). The majority of these colleges still possess their own vestibulares and do not adhere to the standardized national college entrance exam – ENEM. As a result, many students come to São José specifically to prepare for advanced studies.

Despite housing many multinational corporations like Embraer, Gerdau, Thyssen-Krupp, Johnson&Johnson, AmBev and Erikson, this region has no international high school. Enrolling students from a range of national elementaries, Planck also strives to meet the upper level demands of students coming from international curricula like: Esfera (IB MYP), Mater Dei (US), Maple Bear (Canadian).



TO KNOW
INTELLECT



TO DO
ENERGY



TO BE
EMOTION

PPAD – Co-Curricular Engagement Incentive Program

To motivate students and families to place greater value on experiences and interests that transcend the traditional school environment, we developed the PPAD program offering students the opportunity to build their curriculum and digital portfolio. Students are rewarded with quarterly grades corresponding to behavior (attendance, participation, homework) and extracurricular engagement in a wide range of activities including athletics, arts and advanced academic research and pursuits which they capture and share in their own virtual portfolio website.



PPAD
PLANCK DIVERSIFIED
ACTIVITIES PROGRAM

